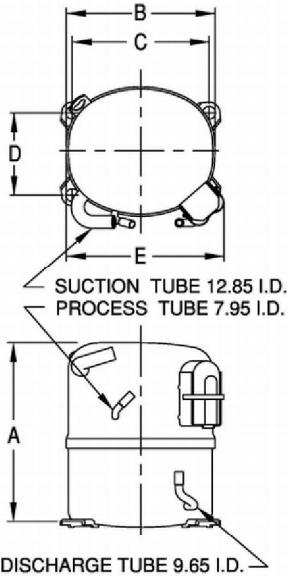




**UNCONTROLLED COPY**  
**KULTHORN KIRBY PUBLIC CO.,LTD.**  
**TECHNICAL SPECIFICATION**

**HERMETIC  
 COMPRESSOR  
 WJ 9490Z  
 BOM ID 88H-A1**

**PRINCIPAL DIMENSIONS - mm**



<b>A</b>	<b>264</b>
<b>B</b>	<b>223</b>
<b>C</b>	<b>203</b>
<b>D</b>	<b>122</b>
<b>E</b>	<b>239</b>

**ELECTRICAL : 220-240 Volt. 50 Hz. 1 Phase**

**Nominal Performance**

Cooling Capacity :	2,345 / 3,986	Watts ( 8,001 / 13,600 )	BTU/Hr
	2,016 / 3,427		Kcal/Hr
Power Input :	1,400 / 1,833		Watts
Lock Rotor Amps :	33 / 33		Amps
Rated Load Amps :	7 / 9		Amps
COP (EER) :	1.68 / 2.17	W/W ( 5.72/7.42 )	BTU/W-Hr

**Testing Conditions**

Condensing Temperature :	54.4	°C
Evaporating Temperature :	-6.7/+7.2	°C
Liquid Temperature :	46.1	°C
Return Gas Temperature :	35	°C
Ambient Temperature :	35	°C

**Application**

Evaporating Range :	<b>MBP/HBP @ -23.3 °C to +12.7 °C</b>
Refrigerant :	R404A
Expansion :	Capillary Tube/Expansion valve
Compressor Cooling :	Fan

**Compressor and Motor data**

Compressor Type :	Reciprocating
Displacement :	26.7 cc.
Oil Type :	Polyolester Oil
Oil Charge :	850 cc.
Motor Type :	<b>C.S.R.</b> ; 2 Pole 2880 / 2880 rpm
Voltage Range :	198-264 Volts 50 Hz.

Winding Resistance at 25 °C

Start :	4.30	Ohms
Run :	1.98	Ohms

Weight with Oil :	22.56	Kg.
Weight with Oil and Accessories :	23.13	Kg.

**Electrical Components**

**Motor Protector :**

Type :	Internal Overload
Model Number :	KGE 656-6
Open / Close :	125-135 78-60 °C
1st Cycle trip :	35 Amps (start) 49 Amps (main)

**Motor Starter (CSR Only) :**

Type :	Potential Relay
Model Number :	KGE 680-6 (GE3ARR3UX6A2)
Pick Up :	242-272 Volts.
Drop Out :	60-121 Volts.
Terminal Cover :	KGM 901-1

**Start Capacitor (CSR Only) :**

Disch. Resistor for Start Cap :	108-130 μ F 330 VAC.
	15000 Ohms 2 W

**Run Capacitor :**

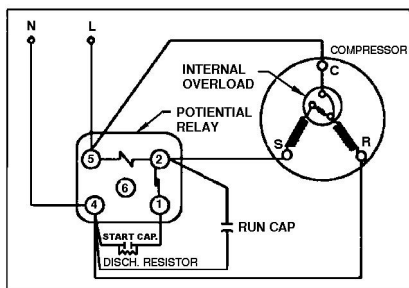
	20 μ F 440 VAC.
--	-----------------

**Mounting Kit**

Rubber Grommet :	KGM 905
Sleeve Grommet :	KGM 903

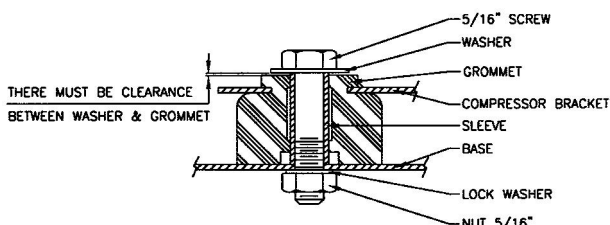
**SCHEMATIC WIRING DIAGRAM**

**SCHEMATIC WIRING DIAGRAM C.S.R.**



**High Torque Start**

**MOUNTING KIT**



Since we are constantly improving our product ,  
 the specification are subject to change without notice.

REV. DATE

15-08-11

C / N No.

0288/11